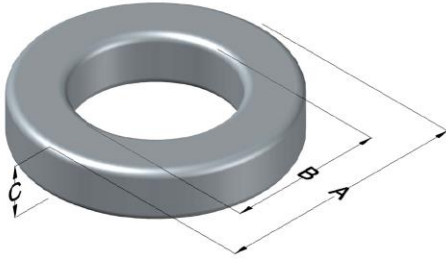




# C055059A2

110 Delta Drive  
 Pittsburgh, PA 15238  
 NAFTA Sales: (1)800-245-3984  
 HK Sales : (852)3102-9337  
 magnetics@spang.com  
 www.mag-inc.com



MPP Permeability ( $\mu$ )	$A_L$ (nH/T <sup>2</sup> )	Core Marking			Coating Color
		Lot Number	Part Number	Inductance Grade	
60	43 ± 8%	XXXXXX	55059A2	X	Gray

Dimensions	Uncoated		Coated Limits			Packaging
	(mm)	(in)	(mm)	(in)		
OD (A)	22.9	0.900	23.7	0.930	max	Bulk Pack 4 bags/box Box Qty= 1000 pcs
ID (B)	14.0	0.550	13.3	0.525	min	
HT (C)	7.62	0.300	8.39	0.330	max	

Electrical Characteristics			Physical Characteristics						
Watt Loss @ 100 kHz, 100mT max(mW/cm <sup>3</sup> )	DC Bias min (oersteds)		Voltage Breakdown wire to wire min (V <sub>AC</sub> )	Break Strength min (kg)	Window Area W <sub>A</sub> (mm <sup>2</sup> )	Cross Section A <sub>e</sub> (mm <sup>2</sup> )	Path Length L <sub>e</sub> (mm)	Volume V <sub>e</sub> (mm <sup>3</sup> )	Weight (g)
	80%	50%							
700	50.0	94.0	1000	39.0	139	31.7	56.7	1,800	15

Winding Information					Temperature Rating	
Winding Length Per Turn				Wound Coil Dimensions (mm)		Curie Temp: 460 °C
Winding Factor	(mm)	Winding Factor	(mm)	40% Winding Factor		Coating Temp (Continuous up to): 200 °C
				OD	25.7	Notes:
				HT	12.4	
				Completely Full Window		
				Max OD	32.6	
				Max HT	19.8	
				Surface Area (mm <sup>2</sup> )		
				Unwound Core		1,600
				40% Winding Factor		2,400

## Typical DC Bias Performance

