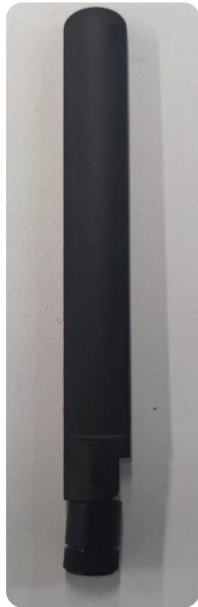




SUNNYWAY



# SWE035

PN: SW20268EB56

## Features

- Antenna for 2400~2500 MHz , 5100~5900MHz
- High gain
- Impedance 50 Ohm.

## Applications:

- Antenna for 2.4G/5G WiFi applications

**Sunnyway Technology**

Add: 1F, Building 4, No.215-99, GaoGuang Road, QingPu District, Shanghai, China

Tel: +86-021-6083 5368

Fax: +86-021-6484 2328

Email: [info@sunny-way.com](mailto:info@sunny-way.com)

Web: [www.sunny-way.com](http://www.sunny-way.com)

## 1. Electrical Specifications

Standards	2.4G/5G WIFI	
	2400~2500	5100~5900
Frequency range (MHz )	2400~2500	5100~5900
Peak Gain (dBi )	4.5~5.3	5.2~6.5
Average Gain (dB )	-2.5~-1.8	-2.2~-0.9
VSWR	< 2.0	< 2.0
Return Loss	< -10.2	< -9.5
Efficiency (%)	56.6~65.9	60.6~81.7
Polarization mode	Linear	Linear
Radiation pattern	Omni-Directional	Omni-Directional
Output impedance ( $\Omega$ )	50	50
Max. Input Power(W)	5	5

## 2. Mechanical and Environmental Specification

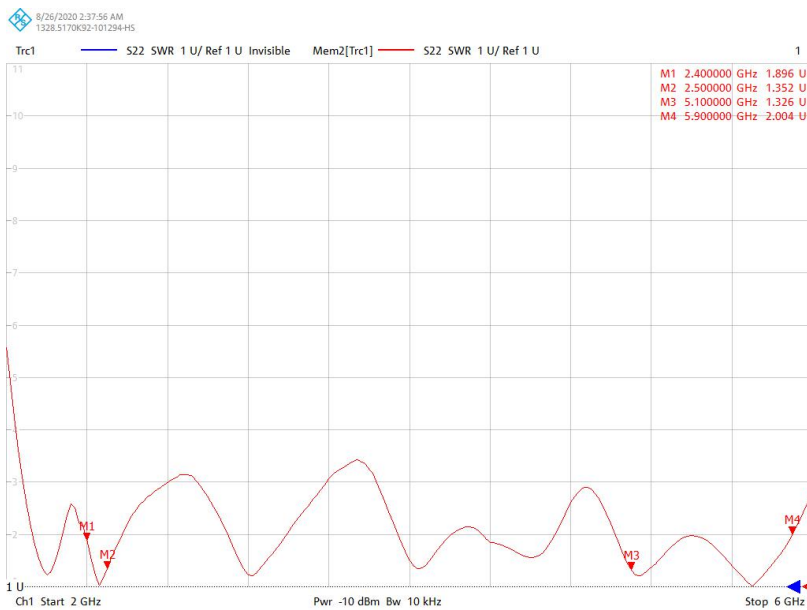
Mounting Type	Connector Mount
Connector Type	SMA
Antenna size(mm)	193*16*13.08mm
Material	ABS+PC
Operating Temperature (°C)	- 40 °C ~ + 85 °C
Storage Temperature(°C)	- 40 °C ~ + 85 °C

## 3. Antenna parameters

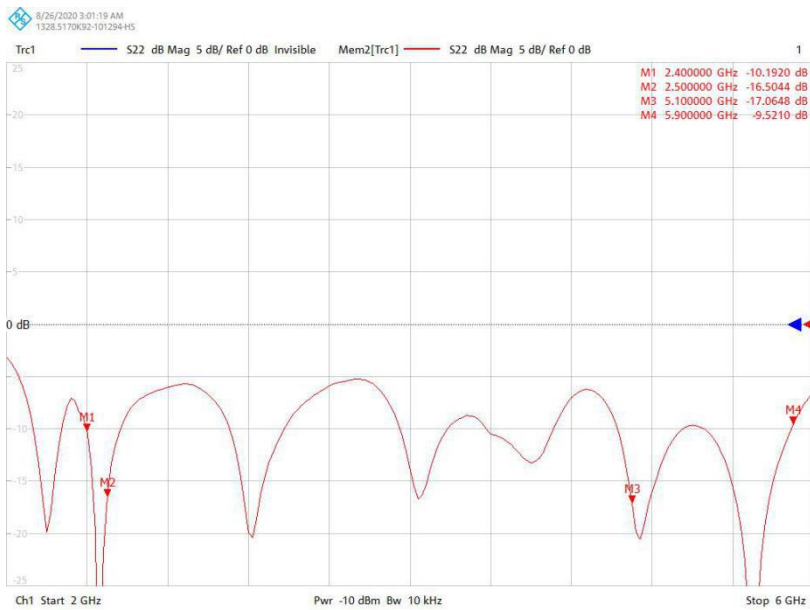
### 3.1 General Data

FRE ( MHz )	2400	2500	5100	5900
VSWR	1.9	1.4	1.3	2.0
Return Loss	-10.2	-16.5	-17.1	-9.5
Eff (%)	56.6	63.9	80.4	75.9
Average Gain(dB)	-2.5	-1.9	-1.0	-1.2

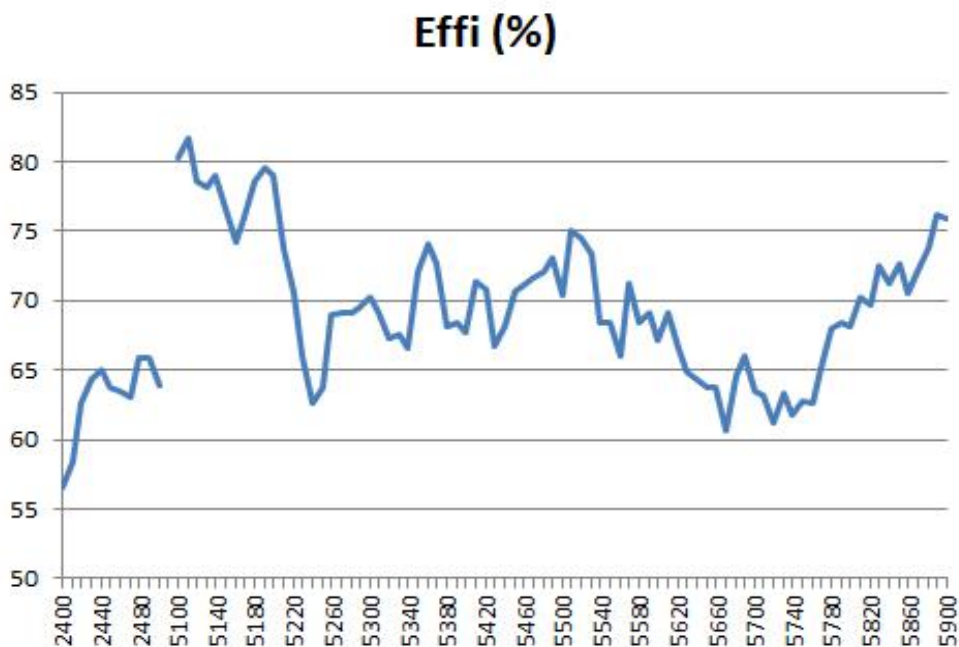
### 3.2 VSWR



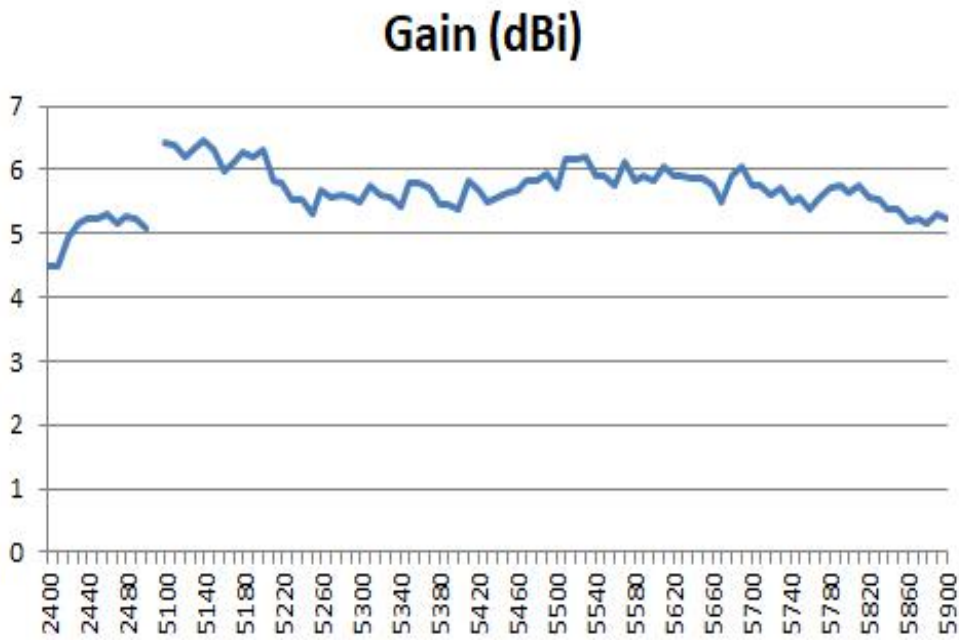
### 3.3 Return Loss



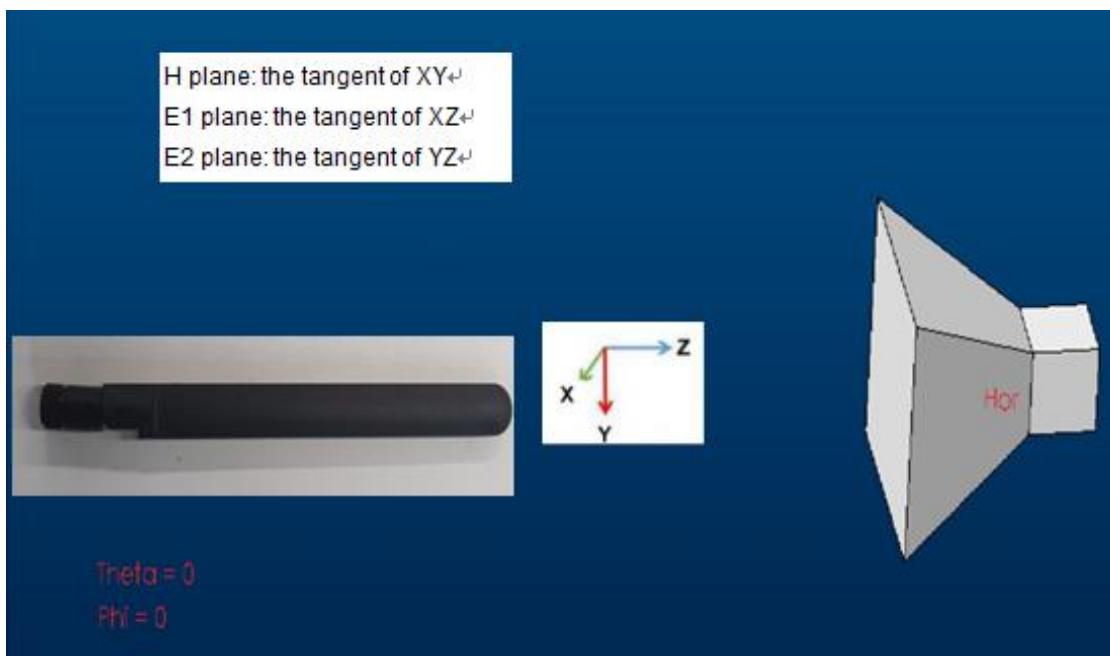
### 3.4 Efficiency

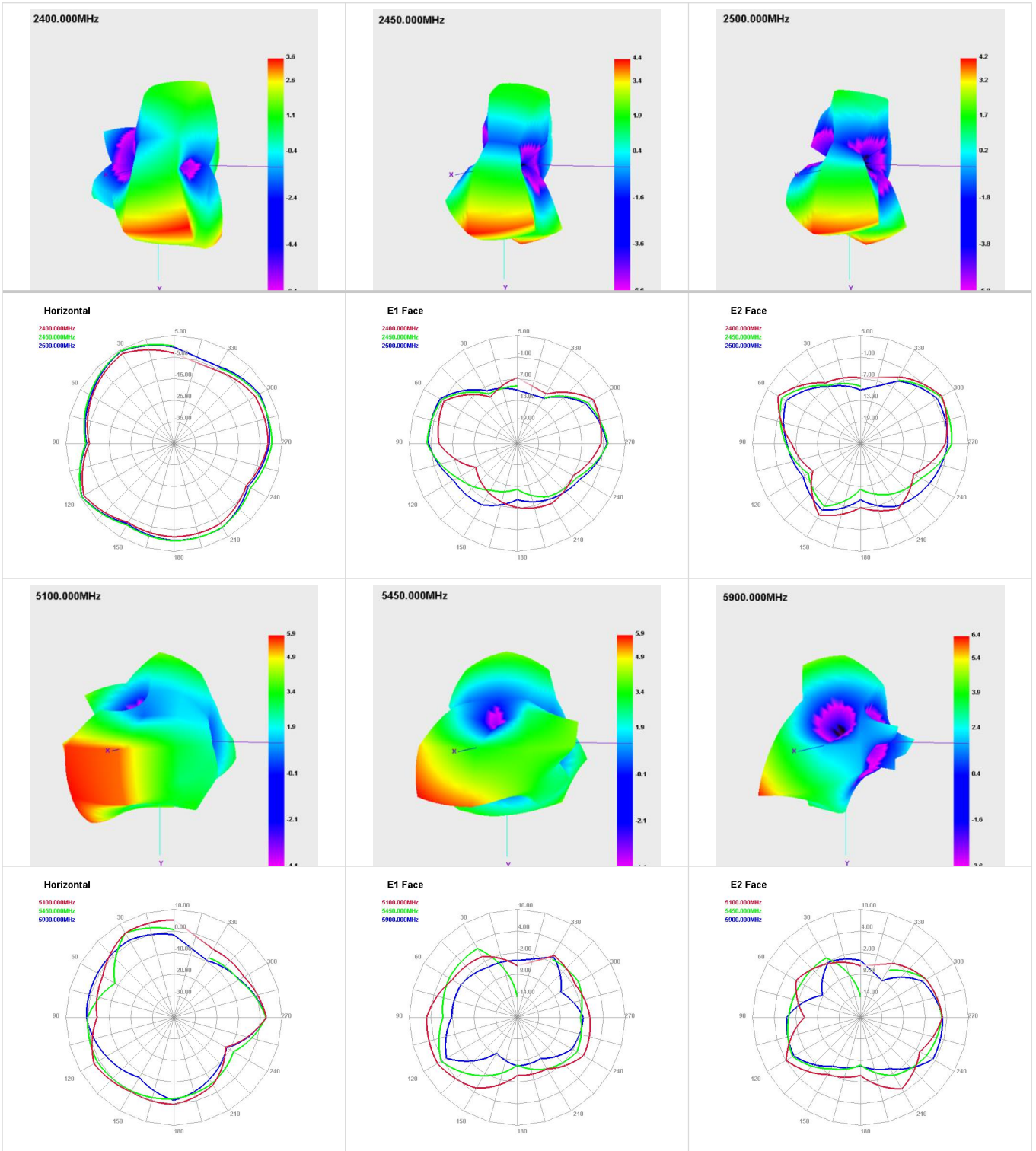


### 3.5 Gain

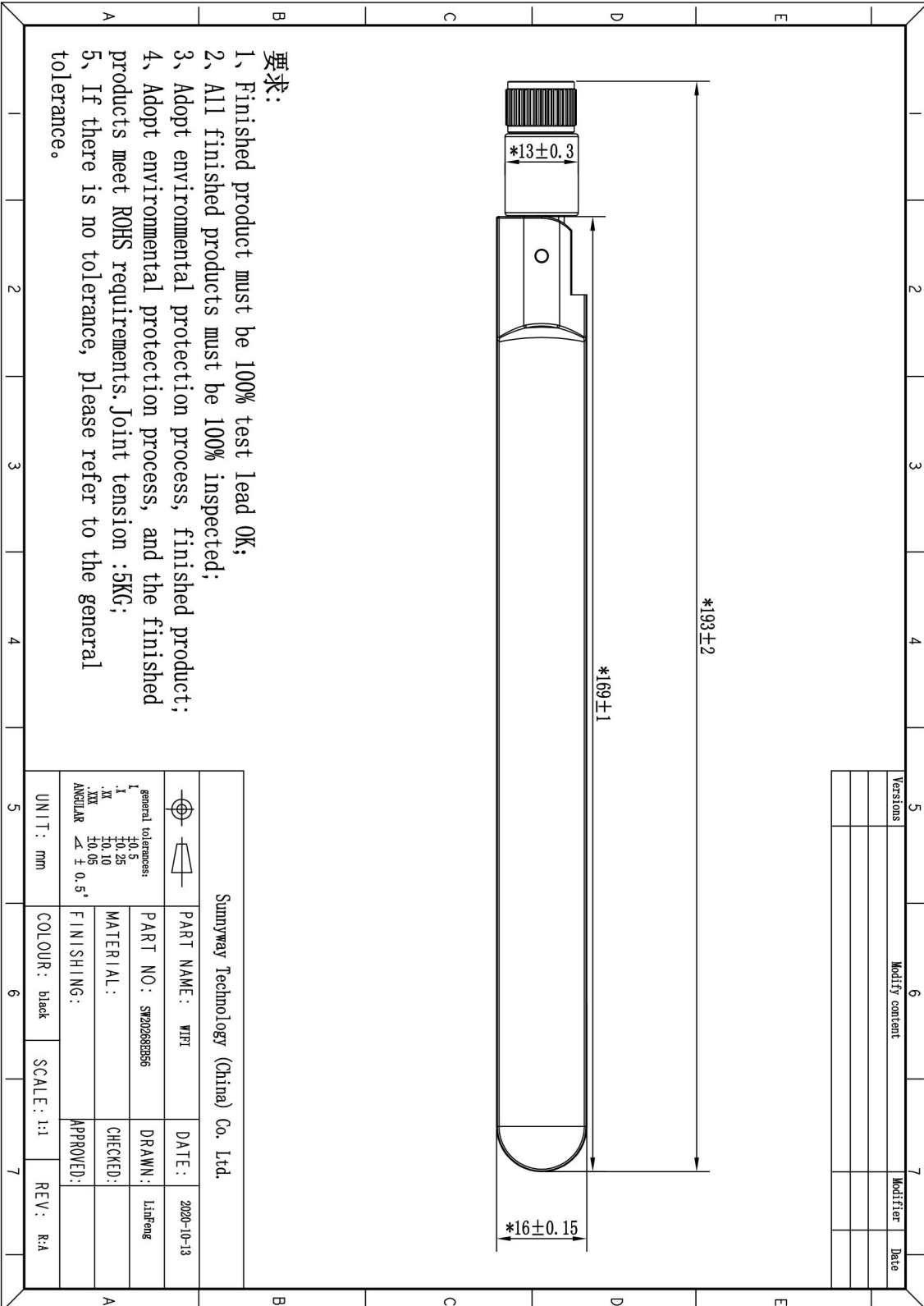


### 3.6 Directional Pattern





## 4. Antenna Drawings





20℃时衰减（允许 误差15%） Attenuation constant at 20℃（Permissible error 15%）	200MHz	dB/100m	39
	400MHz	dB/100m	58
	900MHz	dB/100m	90
	1500MHz	dB/100m	117
	1800MHz	dB/100m	128
	2000MHz	dB/100m	139
	2500MHz	dB/100m	156